

台秤仪表 Platform scale indicator

**XK3118T12-C（客户定制品种）**



<< XK3118T12-C

产品简介：

XK3118T12-C采用 $\Sigma-\Delta$  AD转换芯片，交直流两用，3屏LCD液晶屏显示(带计价功能)，适用于模拟静态等静态称重系统。

· 特点及基本功能：

高精度AD转换，可读性达1/30000；

20倍的内码显示，替代感量砝码观察和分析误差；

开机自动置零范围、手动置零范围可独立设置，零位跟踪范围可设置；

随机充电，欠压指示、电量不足自动关机功能；

具有节能模式（自动关闭背光照明）功能；

累计功能, 选配计数功能；

RS232通讯接口，定制通讯格式；

· 技术参数：

输入灵敏度：  $\geq 1.5\mu\text{V/e}$ ；

AD转换方式：  $\Sigma-\Delta$ 转换方式，20bit；

传感器供桥电源：DC5V,可接1~4个350 $\Omega$ 电阻应变片模拟传感器；

传感器连接方式：采用4线式；

显示： 三屏LCD液晶屏（字高18mm），白色背光，  
1个交流指示灯；

键盘： 20个按键（5\*4）；

仪表电源：

主电源： 110~220V AC，50/60Hz

辅助电源： DC6V /2.5AH免维护铅酸蓄电池，（随机充电）；

使用温度及湿度：0℃~40℃；  $\leq 85\%$ （RH）无冷凝



Introduction

XK3118T12-C adopts  $\Sigma-\Delta$  AD conversion chip. It works with both DC and AC power supply, has 3 LCD screens (with counting function) and is suitable for analog static weighing system.

Characteristics and descriptions:

Highly accurate AD conversion with readability of 1/30000;

20 times display of internal code which can replace the standard weight to observe and analyze errors;

Initial zero setting range and manual zero setting range can be set independently. Range of zero tracking can be set.

Recharging anytime. Low voltage indication. Automatic shut-down at low battery.

Power-saving model (automatic back light OFF).

Accumulation and optional counting function.

RS232 port with custom protocol.

Main technical parameter:

Input sensitivity:  $\geq 1.5\mu\text{V/e}$ ;

AD conversion:  $\Sigma-\Delta$  conversion type, 20bit;

Excitation supply: DC5V. Connect 1~4 strain gauge analog 350 $\Omega$  load cells.

Load cell connection:4 wire;

Display: 3 screen LCD display (letter height 18mm).

White back light and 1 AC indicating light;

Keypad: 20 buttons(5\*4);

Power supply of indicator:

Main supply: 110~220V AC,50/60Hz

Auxiliary supply: DC6V /2.5AH maintenance free lead acid  
Storage battery (recharging anytime);

Working temperature and humidity:

0℃~40℃;  $\leq 85\%$ (RH) non-condensing.

Storage temperature and humidity:

-10℃~60℃;  $\leq 95\%$ (RH) non-condensing.

台秤仪表 Platform scale indicator

**XK3118T16（外贸定制品种）**



<< XK3118T16

产品简介：

XK3118T16电子称重仪表，采用高精度 $\Sigma-\Delta$ AD转换芯片，字高30mm的高亮度LED数码管显示，新颖的外观结构，配置宽电压开关电源，交直流两用，适用于1~6个模拟传感器的静态称重系统。

XK3118T16电子称重仪表配置累加、上下限报警、峰值保持、平均值功能。

· 特点及基本功能：

高精度AD转换，可读性达1/30000；

20倍的内码显示，替代感量砝码观察和分析误差；

开机自动置零范围、手动置零范围可独立设置，零位跟踪范围可设置；

随机充电，有欠压指示及保护装置；

采用恒流浮充电路，有效延长蓄电池寿命；

具有节能模式和自动关机功能；

畜牧秤功能、累计功能, 上下限检重功能，峰值保持、kg/lb转换功能；

配置RS232通讯接口，多种通讯格式；

配置大屏幕接口；

· 技术参数：

A/D转换方式：  $\Delta-\Sigma$ 转换方式，20bit

输入灵敏度：  $\geq 1.5\mu\text{V/e}$

传感器供桥电压：DC 5V,可接1~6个350 $\Omega$ 模拟传感器

传感器连接方式：采用4线式

显示方式： 6位1.2英寸高亮度LED数码管，12个状态指示灯，  
3个电量指示灯，1个交流指示灯

供电电源： AC 110~220V，50Hz~60Hz

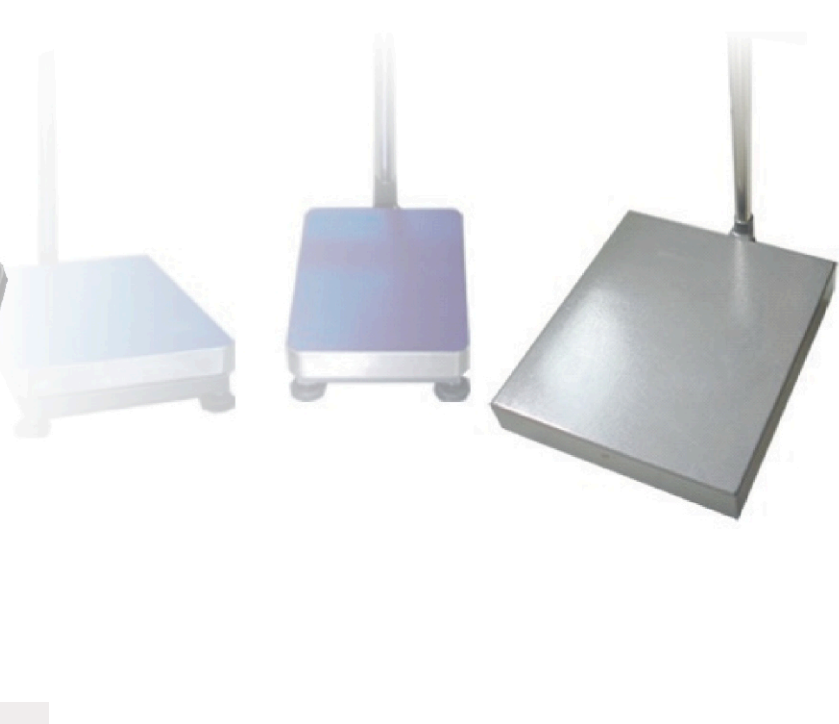
应急辅助电源： 内置6V/4AH免维护铅酸蓄电池，（随机充电）；

使用温度为： 0~+40℃，湿度 $\leq 85\%$ （RH）

存储温度为： -20~+60℃ 湿度 $\leq 95\%$ （RH）

仪表尺寸： 236×150×150mm(长×宽×高)；

仪表重量： 约1.5 (kg)；



Introduction

XK3118T16 electric weighing indicator adopts highly accurate  $\Sigma-\Delta$ AD conversion chip. Highly bright LED display with letter height of 30mm. It has new out-looking and with wide voltage switch, suitable for both AC and CD. It suits for static weighing system of 1~6 load cells.

XK3115T16 electric indicator is with accumulation, up and low limit alarm, peak value retaining and average value function.

Characteristics and basic functions:

Highly accurate AD conversion and readability up to 1/30000;

20 times display of internal code and can replace the standard weight to observe and analyze errors;

Anytime recharging, low voltage indication and protection;

Constant current floating charge circuit to prolong the lifetime of battery;

Energy saving and automatic shut-down;

Animal scale function, accumulation, up and low limit weighing, peak value retaining, kg/lb conversion function;

RS232 communication port and multiple communication formats;

With scoreboard port.

Main technical parameter:

A/D conversion type:  $\Delta-\Sigma$ ,20bit

Sensitivity input:  $\geq 1.5\mu\text{V/e}$

Excitation voltage of load cell: DC 5V, connect 1~6 pcs of 350 $\Omega$  analog load cell

Connection of load cell: 4-wire

Display: 6 bit 1.2" high bright LED tube.12 status indicating lamps  
3 electrical voltage indication lamps and 1 AC lamp

Power supply: AC 110~220V,50Hz~60Hz

Auxiliary supply: Built-in 6V/4AH maintenance-free lead acid battery(anytime charging)

Working temperature: 0~+40℃, humidity  $\leq 85\%$ (RH)

Storage temperature: -20~+60℃ humidity  $\leq 95\%$ (RH)

Dimension of indicator 236×150×150mm (length x width x height)

Weight: 1.5 (kg);